



PointRed Technologies. Inc,

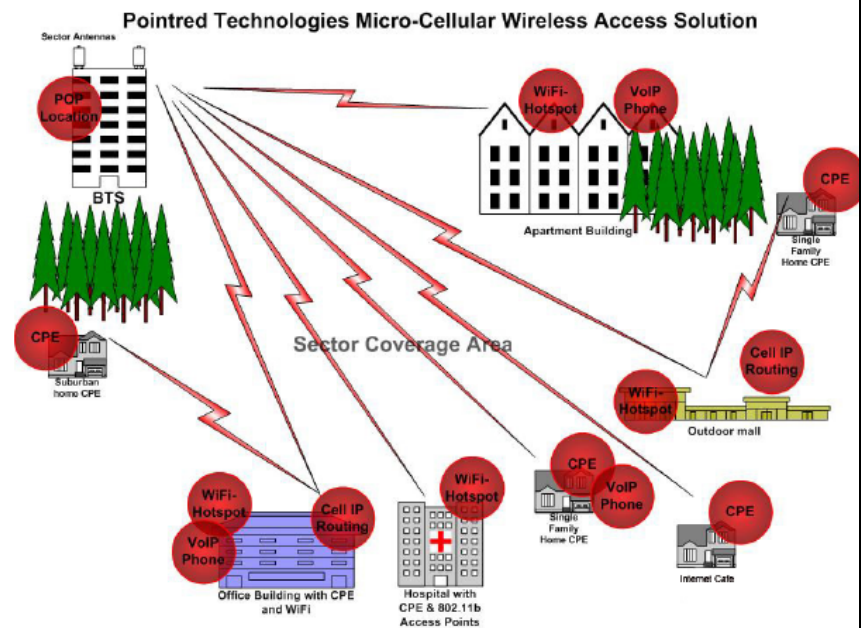
Delivering Wireless Broadband anywhere in the World



PRODUCT HIGHLIGHTS

- Easy to install and operate.
- Pay-as-you-grow Microcells to reduce startup costs.
- Minimal infrastructure costs.
- Excellent coverage within cell.
- Affordable broadband in areas where DSL and cable are too costly to install.
- Non-line-of-sight operation capability through patent pending CellIP™ technology.
- Point-to-Point operation capability for backhaul application.
- SNMP based embedded Network Management System.
- Quality of Service featuring Voice Priority, supporting H323 or SIP.
- Dynamic Bandwidth Allocation on a packet-to-packet basis.
- Microwave parameters software programmable.
- Excellent MTBF.

The MicroRed 2400 (2.4GHz) product family uniquely combines Point to Point and Point to Multipoint applications in the same product family. Where the Point to Multipoint system works in complete Non Line of Sight conditions. The Non Line of Sight operation of the Multipoint system is enabled by the Patent Pending CellIP™ technology. The MicroRed system is ideal for the use with homes or SOHO customers since it utilizes a real plug and play approach where the end customer doesn't need to install any software on his PC.



Ethernet Networking for Broadband Access – PointRed’s MicroRed utilizes standard Ethernet networking interfaces for base station and CPE’s to provide an elegant solution for scaling and managing the broadband network at both, the cell site and the enterprise or home.

Voice over IP – PointRed’s innovative CellIP™ technology implemented in the MicroRed system is capable of operating in NLOS conditions with virtually no communication impairments, different from equipment using OFDM technology. Its compatibility with the worldwide most commonly used Voice over IP standards combined with its excellent latency characteristics allow the MicroRed system to interface directly with VoIP phones and gateways.

2.4 GHz P-t-P and P-t-MP Product Specifications

India

#865 Zapur House, 1st Block, 1st Cross, HAL 3rd Stage, Bangalore, India 560 075.

Tele Fax +91-80-25289542 Email: info@pointredtech.com, Web: www.pointredtech.com

Base Station Includes:

- 1 Modem/ Network Interface Unit (Ethernet Interface)
- 1 Microwave Transceiver
- 1 Transceiver Installation Kit (includes mounting brackets)
- Base Station mounting bracket includes bracket that mounts to the pole/ mast, size of bracket 1.25" for small pole/ mast
- 1 Installation and Configuration Manual

Base Station Backhaul Interface Options:

- 10/100 Base-T Ethernet Interface

Base Station Antenna Option:

- Omni Antenna 9dBi
- 60° Sector Antenna 17dBi
- 90° Sector Antenna 13dBi

Base Station 4Mbps or 8Mbps Specifications:

- Frequency: 2400 – 2486 MHz
- Frequency Step: 0.5MHz
- Power Control: ≥ 20 dB
- Capacity: 4Mbps or 8Mbps
- Max Throughput:
 - 4Mbps System - 3.5Mbps Full-duplex
7Mbps Half-duplex
 - 8Mbps System - 7.1Mbps Full-duplex
14.2Mbps Half-duplex
- Graphical User Interface and SNMP support
- BTS Network Interface: 10/100 Base-T Ethernet
- Power Supply: 110/220 VAC for Base Station
- Power Consumption: 17 Watt
- Dimensions: 525X212X125 mm for the Base Station
- 165X165X40 mm for the Transceiver
- Antenna Interface: N Connector 50 Ohm Female
- Alarming: Transceiver not responding, WAN Packet Loss
- Output Power: +25dBm guaranteed; +27dBm typical
- Receiver Sensitivity: -73dBm @ 10^{-6} BER
- Environmental: -33°C to +60°C/ 95% humidity for the Transceiver.
- Range: 12 to 15Kms in LOS conditions.

CPE Unit Includes:

- 1 CPE Modem unit
- 1 Microwave Transceiver with mounting hardware
- 1 Installation and Configuration Manual

CPE Antenna Option:

- Omni Antenna 9dBi
- Panel Antenna 11, 16dBi
- Reflector Antenna 19, 21 & 24dBi

CPE 4Mbps or 8Mbps Specification:

- Frequency: 2400 – 2486 MHz
- Frequency Step: 0.5MHz
- Power Control: ≥ 20 dB
- Capacity: 4Mbps or 8Mbps
- Max Throughput:
 - 4Mbps System - 3.5Mbps Full-duplex
7Mbps Half-duplex
 - 8Mbps System - 7.1Mbps Full-duplex
14.2Mbps Half-duplex
- CPE Network Interface: 10/100 Base-T Ethernet
- Power Supply: 110/220 VAC
- Power Consumption: 17 Watt
- Ventilation: Not Applicable
- Dimensions: 208X140X57 mm for the CPE
- 165X165X40 mm for the Transceiver
- Antenna Interface: N Connector 50 Ohm Female
- Alarming: Transceiver not responding, WAN Packet Loss
- Output Power: +25dBm guaranteed; +27dBm typical
- Receiver Sensitivity: -73dBm @ 10^{-6} BER
- Environmental: -10°C to +50°C for the CPE Modem Unit. -33°C to +60°C/ 95% humidity for the Transceiver.

Point to Point Specification 4Mbps or 8Mbps

- Frequency: 2400 – 2486 MHz
- Frequency Step: 0.5MHz
- Power Control: ≥ 20 dB
- Capacity: 4Mbps or 8Mbps
- Max Throughput:
 - 4Mbps System - 3.5Mbps Full-duplex
7Mbps Half-duplex
 - 8Mbps System - 7.1Mbps Full-duplex
14.2Mbps Half-duplex
- Network Interface: 10/100 Base-T Ethernet
- Power Supply: 110/220 VAC
- Power Consumption: 17 Watt
- Range: 35 to 40Kms in LOS conditions
- Dimensions: 208X140X57 mm for the CPE
- 165X165X40 mm for the Transceiver
- Antenna Interface: N Connector 50 Ohm Female
- Alarming: Transceiver not responding, WAN Packet Loss
- Output Power: +25dBm guaranteed; +27dBm typical
- Receiver Sensitivity: -73dBm @ 10^{-6} BER
- Environmental: -10°C to +50°C for the Master CPE & Slave CPE Modem Units. -33°C to +60°C/ 95% humidity for the Transceiver.

India

#865 Zapur House, 1st Block, 1st Cross, HAL 3rd Stage, Bangalore, India 560 075.

Tele Fax +91-80-25289542 Email: info@pointredtech.com, Web: www.pointredtech.com