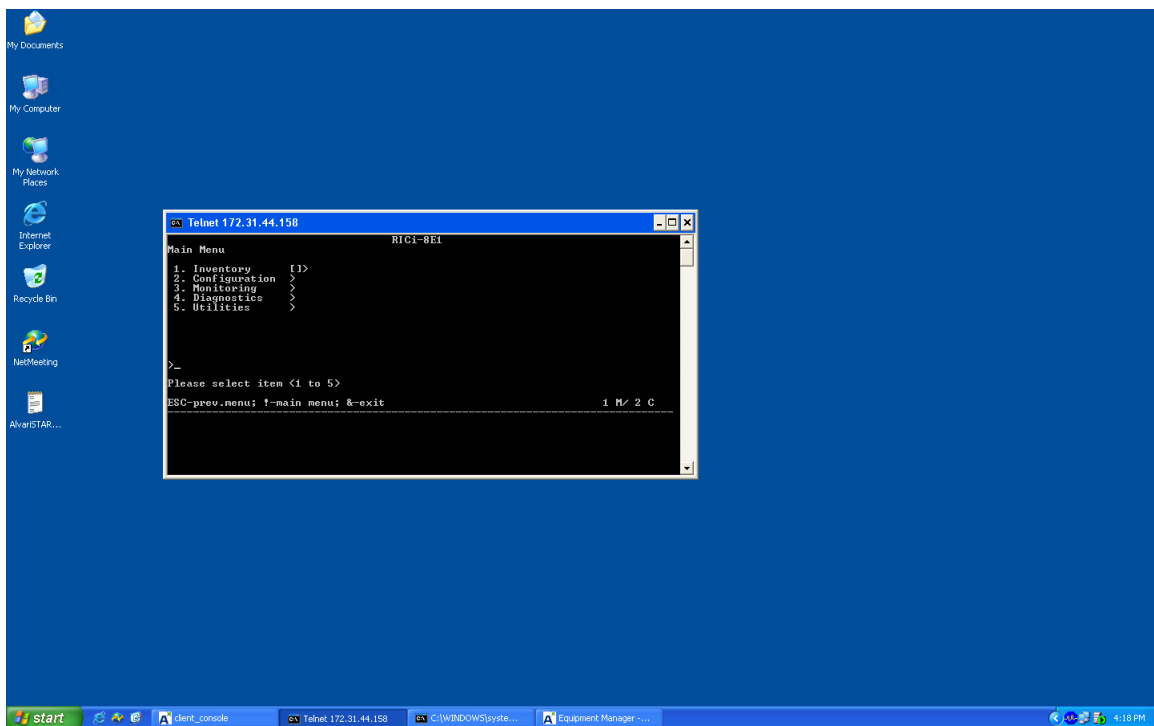


Telnet converter IP (172.31.44.158)

User name :- SU

Password :- 1234

## 1.Main Menu




2. Press 2 for configuration and Enter



```
cx Telnet 172.31.44.158
RICi-8E1
Main Menu
1. Inventory      [1]>
2. Configuration >
3. Monitoring    >
4. Diagnostics   >
5. Utilities     >

>2_
Please select item <1 to 5>
ESC-prev.menu; !-main menu; &-exit          1 M/ 2 C
```

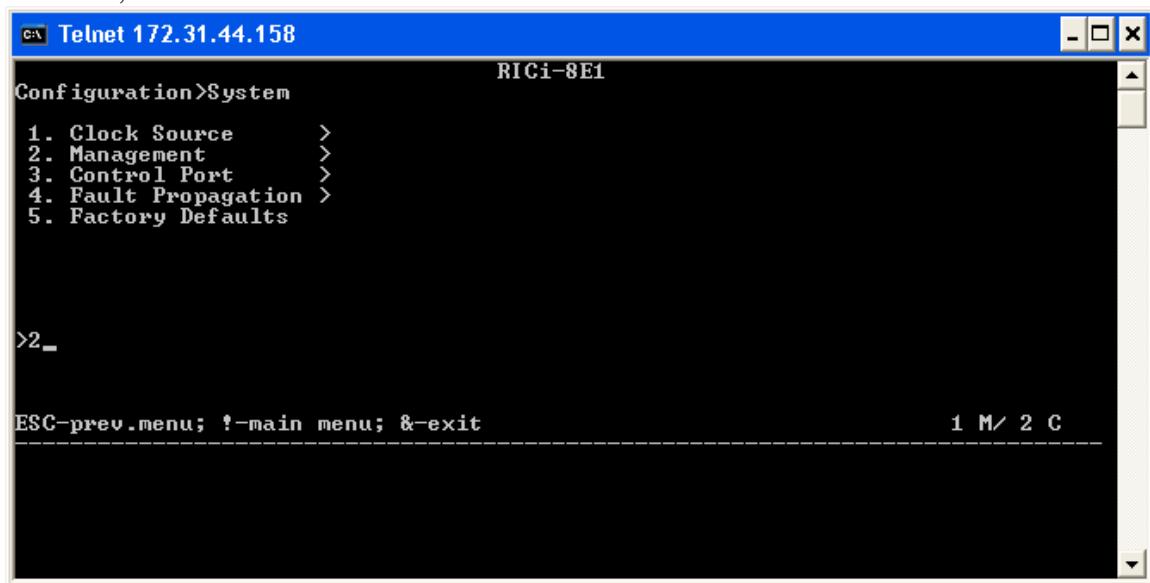
3. Then mentioned window will come and press 1 ,enter



```
cx Telnet 172.31.44.158
RICi-8E1
Configuration
1. System        >
2. Physical Ports >
3. Logical Layer >
4. Applications  >

>1_
ESC-prev.menu; !-main menu; &-exit          1 M/ 2 C
```

Go to 2 , Enter



```
C:\> Telnet 172.31.44.158  
Configuration>System  
RICI-8E1  
1. Clock Source >  
2. Management >  
3. Control Port >  
4. Fault Propagation >  
5. Factory Defaults >  
  
>2_
```

ESC-prev.menu; ?-main menu; &-exit 1 M/ 2 C

Go to 1 , Enter

```

C:\ Telnet 172.31.44.158
RICi-8E1
Configuration>System>Management
1. Device Info >
2. Host IP >
3. Manager List [1]>
4. Management Access >

>1_

ESC-prev.menu; !-main menu; &-exit 1 M/ 2 C

```

It will ask for Device name ,location .

```

C:\ Telnet 172.31.44.158
RICi-8E1
Configuration>System>Management>Device Info
Description <Fast Ethernet over Eight E1 NTU>
1. Device Name ... <RICi-8E1>
2. Location ... <SDF building Kolkatta<Baranagar>>
3. Contact Person ... <Name of Contact Person>

>_

ESC-prev.menu; !-main menu; &-exit 1 M/ 2 C

```

Go to respective option and than it will ask for **SAVE ( 4th option)**

```
Telnet 172.31.44.158
RICi-8E1
*Configuration>System>Management>Device Info
Description          <Fast Ethernet over Eight E1 NTU>
1. Device Name      ... <For Wimax BTS Baranagar>
2. Location         ... <SDF building Kolkatta<Baranagar>>
3. Contact Person  ... <Name of Contact Person>
4. Save

>4_

ESC-prev.menu; !-main menu; &-exit          1 M/ 2 C
```

Go to 2 , Enter .

```
Telnet 172.31.44.158
For Wimax BTS Baranagar
Configuration>System>Management
1. Device Info      >
2. Host IP          >
3. Manager List     [1]>
4. Management Access >

>2_

ESC-prev.menu; !-main menu; &-exit          1 M/ 2 C
```

Mentioned 7 options will come .

```
Telnet 172.31.44.158
For Wimax BTS Baranagar
Configuration>System>Management>Host IP
1. IP Address      ... <172.31.44.158>
2. IP Mask         ... <255.255.255.248>
3. Default Gateway ... <172.31.44.153>
4. Read Community  ... <public>
5. Write Community ... <private>
6. Trap Community  ... <public>
7. Encapsulation  >

>_

ESC-prev.menu; ?-main menu; &-exit          1 M/ 2 C
```

After entering IP details it will ask for SAVE ( 8<sup>th</sup> option)

```
Telnet 172.31.44.158
For Wimax BTS Baranagar
Configuration>System>Management>Host IP
1. IP Address      ... <172.31.44.158>
2. IP Mask         ... <255.255.255.248>
3. Default Gateway ... <172.31.44.153>
4. Read Community  ... <public>
5. Write Community ... <private>
6. Trap Community  ... <public>
7. Encapsulation  >
8. Save

>8_

ESC-prev.menu; ?-main menu; &-exit          1 M/ 2 C
```

After IP configuration ,Press ESC to go to previous menu . Press 7 ,Enter .

```
Telnet 172.31.44.158
For Wimax BTS Baranagar
Configuration>System>Management>Host IP
1. IP Address      ... <172.31.44.158>
2. IP Mask         ... <255.255.255.248>
3. Default Gateway ... <172.31.44.153>
4. Read Community  ... <public>
5. Write Community ... <private>
6. Trap Community  ... <public>
7. Encapsulation  >

>7_

ESC-prev.menu; ?-main menu; &-exit          1 M/ 2 C
```

Then press 1 , ,It will change from untagged to Tagged .(By default it will Show Untagged )

Then go to 2 and configure VLAN . After enter it will ask for SAVE ( 5<sup>th</sup> option will come )

```

Telnet 172.31.44.158
For Wimax BTS Baranagar
Configuration>System>Management>Host IP>Encapsulation
1. Host Tagging <Tagged>
2. Host VLAN ID[1 - 4094] ... <505>
3. Host Priority Tag[0 - 7]... <0>
4. Security Definition <All>

>_

ESC-prev.menu; ?-main menu; &-exit 1 M/ 2 C
```